



*Remember this: whoever sows sparingly will also reap sparingly, and whoever sows generously will also reap generously. Each man should give what he has decided in his heart to give, not reluctantly or under compulsion, for God loves a cheerful giver. And God is able to make all grace abound to you . . . having all that you need . . .*

**2 Corinthians 9:6-8, NIV**



*Command those who are rich in this present world not to be arrogant nor to put their hope in wealth, which is so uncertain but to put their hope in God, who richly provides us with everything for our enjoyment. Command them to do good, to be rich in good deeds, and to be generous and willing to share. In this way they will lay up treasure for themselves as a firm foundation for the coming age.*

**1 Timothy 6:17-19, NIV**



# Lakeshore Community Church 2008-2011



*Be sure to **finish the work** the Lord gave you. Colossians 4:17, NCV*



© 2008, Lakeshore Community Church  
3651 Latta Rd, Rochester, NY 14612-2813  
[www.lakeshorechurch.org](http://www.lakeshorechurch.org), 585-392-LAKE (5253)



**For our children, our church, our community, the commission**

# Let's finish God's work together!

# God's work at Lakeshore so far...



When we first moved into our current facility in 2004, Lakeshore people were ecstatic. After renting for over nine years (we were in no rush to build), we knew our days of set-up and tear down for every service were over. But what we didn't know was how things would change. Could we handle the new responsibilities? Would we continue to grow spiritually and numerically? What new challenges would we face?

By faith, we trusted God to help us afford our new mortgage, and He has met the need through you. By faith, we've continued to see many new people commit their lives to Christ, and watched them take growth steps. By faith, we've helped maturing believers deepen their walk with God. And by faith, we've seen our church nearly double in size since we moved in.

Because of this growth, again by faith, we believe God is calling us to complete the first phase of our campus development by building the Lakeshore Community Center—the "LC2"—through the *Finishing The Work* campaign.

We knew the LC2 was needed as early as 2002, and it has been in our plans since then. Over the years, the floor plan has changed, but the need hasn't. We need more space and venues to support the multiple bottlenecks which we knew our current facility would eventually experience. We designed our current facility so that we could build the LC2 to meet these specific space needs affordably.

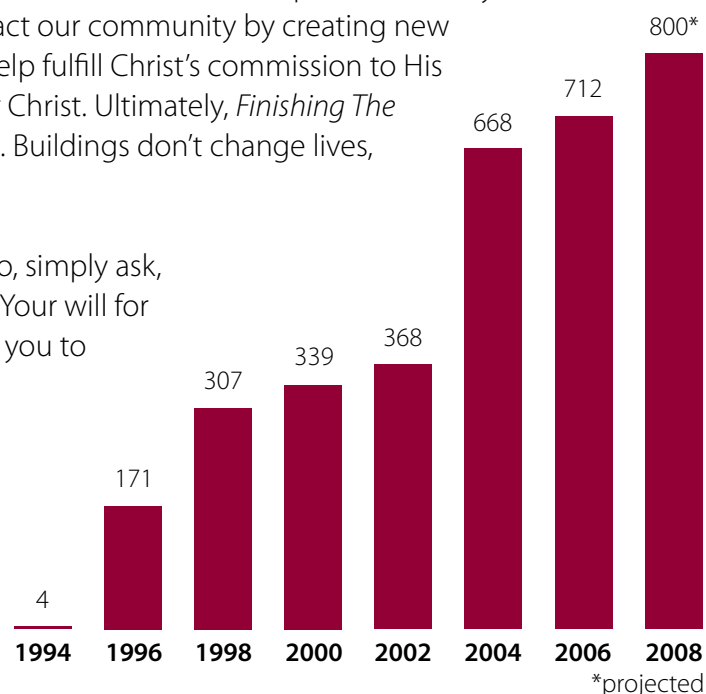
As we continue to grow numerically, the need for the LC2 grows as well. With this new facility, we'll serve our children even more effectively as they learn in more spacious rooms. We'll help our church by providing more room to accommodate growth. We'll impact our community by creating new venues for outreach and integration of guests. And we'll help fulfill Christ's commission to His church—turning the indifferent into difference-makers for Christ. Ultimately, *Finishing The Work* is not about building a building, but building people. Buildings don't change lives, but what happens inside them does!

Read this brochure over carefully and prayerfully. As you do, simply ask, "Lord, what do You want to do through me to accomplish Your will for Lakeshore?" If you pray that prayer and do what God leads you to do in faith, we will finish this work together.

Warmly,

*Pastor Vince, Sue DiPaola*

Pastor Vince & Sue DiPaola



Lakeshore held services in ten different meeting places from our inception on Easter, 1995 through June 6, 2004. Over 500 services required transporting all our equipment, and set-up and tear-down by many dedicated people. We wanted to wait as long as possible so we could build as large a facility as possible



In February 2001, Lakeshore purchased our current 36 acre property thanks to the sacrificial giving of over 100 families to our first campaign, *Possess The Promisedland (PPL)*. The land was dedicated that summer on July 22, 2001.



On June 13, 2004, after one year of construction, we celebrated the first service in our new building. Nearly half of the property was cleared and developed during construction. Many more families gave generously to our second campaign, *A Place To Call Home (PCH)*.

After moving into our current facility, we needed additional income to support our mortgage, pave the parking lot, upgrade our technology and build the Lakeshore Community Center (LC2). The giving by LCCers to our *Home Improvements (HI)* campaign paid for these projects, including about one third of the cost to build the LC2.

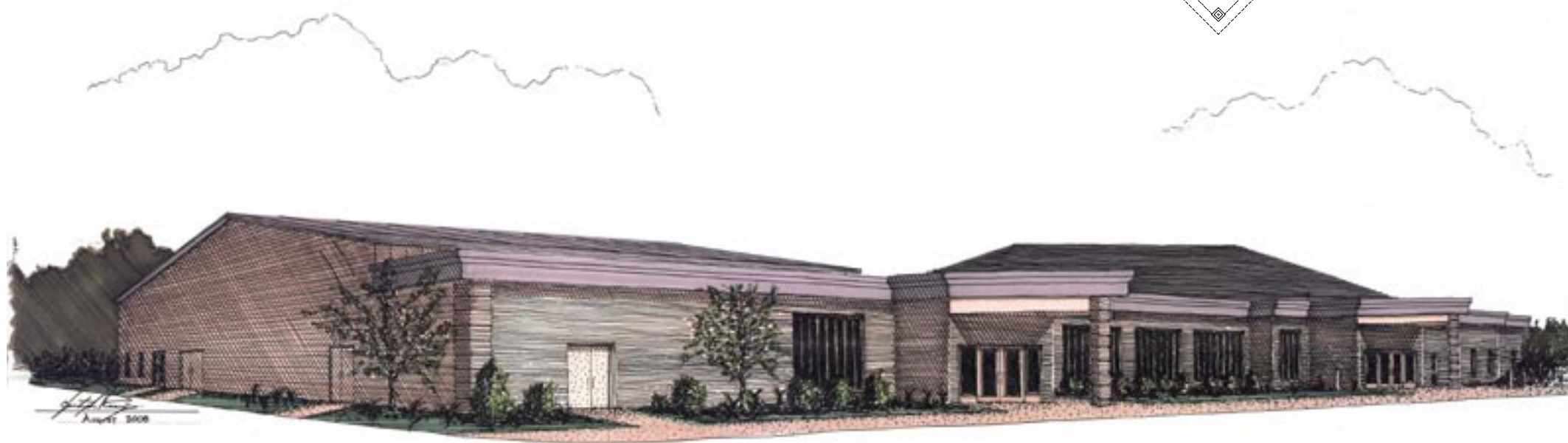
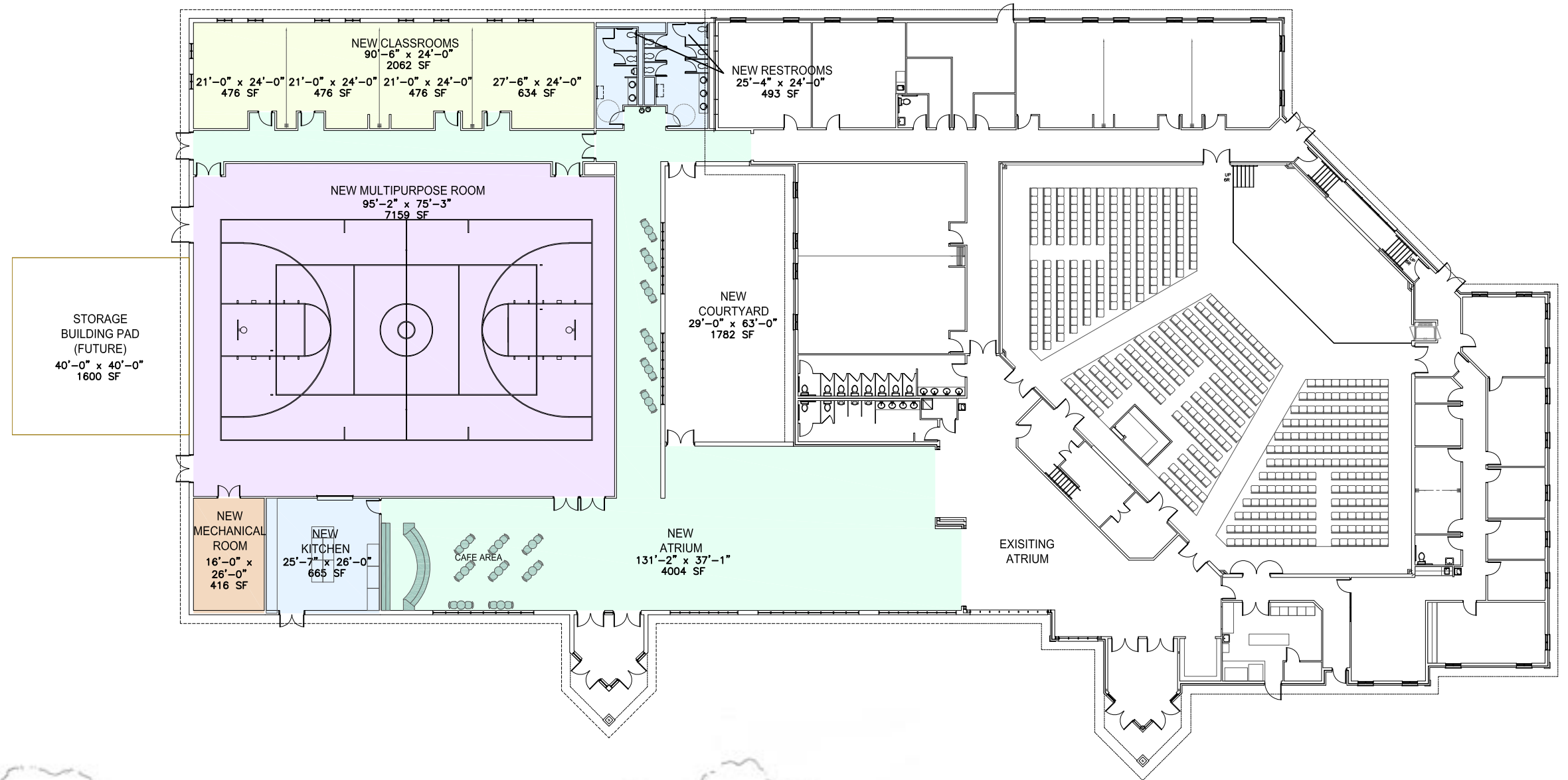
The purpose of the *Finishing The Work (FTW)* campaign is to complete the mission of *Home Improvements* by providing for the remaining funds needed to build the Lakeshore Community Center debt-free.



**Will Strowe**—"What would the LC2 mean to our teens? The new LC2 would give us more room for teaching, learning and recreation. I think the extra rooms will help us be able to open up to a bigger variety of teens (like break outs for senior high and junior high, or girls and boys), and the multipurpose area will give us a great space for playing, hanging out and other activities—especially during the winter."

# The Lakeshore Community Center:

# Finishing the Phase One work



The Lakeshore Community Center will connect to our existing facility both in back to the classrooms and in front to the atrium. The LC2 will add approximately 18,600 square feet, increasing our total facility size to 40,000 square feet. Features of the LC2 include:

- 7,200 square foot multi-purpose area
- 4,000 square foot additional atrium space
- 2,100 square feet in four classrooms
- 700 square foot full-service kitchen
- 1,600 square foot equipment and storage building
- 1,800 square foot courtyard area

# Why do we need the LC2?

## 1. We need more classroom space.

Those familiar with our current facility usage know that all the classrooms are full on Sundays. Some of our children's ministry and youth rooms are very full. And when adults need classrooms, too often rooms are scarce. Our kids and adults need the additional rooms that the Lakeshore Community Center will provide.



## 2. We need a larger atrium.

The current atrium can no longer handle service sizes that approach auditorium capacity. This reduces the opportunity to welcome and greet guests and to connect with our friends after service. Additionally, when we hold a Ministry Fair or need more tables in the atrium, we are limited by its size. The expansion will increase the atrium from 2,500 square feet to 6,500 square feet so that it matches the size of our auditorium. And it will also feature a café!



## 3. We can use a large multi-purpose venue.

Without a large multi-purpose area, we have been unable to host and minister through functions like large youth events, banquets, dinners, wedding and funeral receptions, IMPACT ministry fairs, Celebrate Recovery, sports, outreach events and the like. The Lakeshore Community Center will accommodate these functions and more.



## 4. We can build a full-size kitchen.

Our current kitchen is big enough for what we currently do, but not much more. The Lakeshore Community Center will provide a full-service kitchen capable of serving hundreds in the adjacent multi-purpose room. Together with our current kitchen, we will have enough food preparation capacity for virtually any event our building can handle.



## 5. We just need more room to accommodate growth.

As our church grows, we simply need more room. The Lakeshore Community Center will complete our phase one plans and allow our church to grow to three services without the need for more space. In fact, it will accommodate our growth up to about 2,000 people!



**Kathy Falzone**—"The LC2 would give us even more opportunities to reach the community and draw in the unchurched. People of all stages of life are looking to connect with others, and we could provide more opportunities for fellowship over coffee in the café as well as receptions and banquets of all kinds, music events, another large teaching venue and recreation in the multipurpose room. It would enhance Celebrate Recovery in numerous ways and free up the building from the space-scheduling conflicts we currently face."

# What will it take?

Because of the critical need for the Lakeshore Community Center, we hope to begin construction in April or May of 2009. The timing of construction will depend on the speed of funding that comes from *Finishing The Work*. The following is a breakdown of our projected costs and income:

## Approximate projected costs:

The Lakeshore Community Center:	\$1,450,000
Home Improvements campaign surplus:	- \$450,000
<b>Total amount needed:</b>	<b>\$1,000,000*</b>

*Everything is possible for him who believes.*  
**Mark 9:23b, NIV**

Our *Finishing The Work* campaign financial objective is to reach (or exceed) this \$1,000,000 total.

\*Twenty five percent of any funds raised which exceed our actual LC2 costs (they may vary from these projections) will be set aside for a new *Finishing The Work* Global Impact Fund which will be used to fund missions trips, missions projects and missionaries, so that Lakeshore can make a greater contribution to the Great Commission world-wide!

*But just as you excel in everything— in faith, in speech, in knowledge, in complete earnestness and in your love for us— see that you also excel in the grace of giving.* **2 Corinthians 8:7, NIV**



**Chris Resig**—"The design that the Lakeshore team and I have come up with for the LC2 will allow Lakeshore to effectively expand ministry space. It will create an extension of existing hallways and the atrium, eliminating pinch points or bottlenecks. The multipurpose area and classrooms add strategic new space. And the full-size kitchen opens up new doors to food service. When completed, members and attenders will not be able to tell where the current building stops and the new addition begins. This will be a pretty seamless addition."

## Key dates to remember

**Sun, Oct 12 – Sat, Oct 25**

Campaign Preparatory Prayer

**Sun, Oct 26**

*Finishing Well* message series begins

**Sun, Nov 2**

*Finishing The Work* Leadership Team dessert held in the evening

**Mon, Nov 3–Thurs, Nov 13**

*Finishing The Work* Vision meetings with Pastor Vince for all LCCers held at Lakeshore each weekday evening during these weeks

**Sat, Nov 15**

*Finishing The Work* Day of Prayer event

**Sun, Nov 23**

*Finishing The Work* All-Church Celebration services

**Sun, Dec 7**

Announce *Finishing The Work* total, and turn in our up-front gifts

The process of committing to *Finishing The Work* is like embarking on a spiritual journey. In light of all that has taken place at Lakeshore, we are confident God has a plan for Lakeshore and a vision for what He wants to do through us. **It is up to us to discern and respond to His plan.**

From now until late November, you will have several opportunities to receive help and guidance along this spiritual journey. Our Sunday series, *Finishing Well*, will highlight our spiritual growth emphasis for the campaign. *Finishing The Work* Vision meetings will be held on several nights at church to help you understand the vision and need of this project, and **how your financial contribution can help further our mission** to turn the indifferent into difference-makers for Christ.

To further help in this journey, we will hold a day of prayer event on Saturday, November 15 to ask God to work out His perfect plan for Lakeshore, and to guide you in your part. Our prayer will be, **“Lord, what do You want to do through me to accomplish Your will for Lakeshore?”**

The climax will occur at our All-Church Celebration services on Sunday, November 23. It will be a time to thank God for how He has worked in our lives, to appreciate His blessings and celebrate together as a church family. **At these services, we will turn in our *Finishing The Work* commitment cards** as a way to give back to the God who has used this church to give to us all.

## Commitment Day: Sunday, November 23

We'll each bring our commitment cards to our special All-Church Celebration services. Our financial commitments are to be what we intend to give over and above our regular tithes and giving during the next 36 months. If you are unable to attend the services, we request that you turn in your card as close to November 23 as possible.



**Kayla & Kasie Cash**—“The teens at Lakeshore would benefit greatly from the community center. There are more teens than there is space, and a new building could help minister to more kids. The LC2 could also help the ministry because it would be easier to reach the senior and junior high at more appropriate levels at the same time. The space could also be a common place for teens to come together within the community. Our church is thriving vigorously, and we need to continue our outreach.”

## Here are a number of ways you can give to *Finishing The Work*:

### 1. Give a one-time up-front gift.

This is what you can give up front to *Finishing The Work*. By giving the largest gift you can, you will help us raise the money needed to begin building sooner.

### 2. Make a 36 month giving pledge.

This is what you give during the length of the campaign above and beyond your regular tithes and giving. You can give far more than you thought possible when you spread out your giving over 36 months. For your convenience, you may also give on-line and through automatic transfer of assets.

### 3. Give stocks or securities.

This is another creative way to give to *Finishing The Work*. Please indicate the nature of this stock or security on your Commitment Card and our Finance Team will contact you.

### 4. Make Lakeshore a beneficiary in your will.

There are ways to include your church in your estate and leave an inheritance to your heirs at the same time.

***God is calling us on an exciting adventure—  
we wouldn't want you to miss it!***



**Maureen Phillips**—“I remain ever-thankful for the church home we do have. During our busiest time, now, we have more than 20 children in a classroom. God is present in each of the rooms, this will not change. What will change is the comfort of the children. Crowded classrooms can distract the kids when they bump elbows and step on each others feet. By adding needed classroom space, it provides our children with an environment that allows them to focus on the most important message: Jesus loves them and so do we!”

## Take a personal inventory

Consider investing from as many areas as possible.

### Income

How much can I budget from income to give?

### Time & talents

What can I do or invest during the next three years to generate additional income?

### Assets

What items of value do I own that I can give to my church (real estate, stocks, bonds, possessions, etc.)?

### Income-producing assets

What income can I deduct from rental properties, stocks, bonds, certificates of deposit, interest-bearing accounts, or other assets?

### Sacrifice

What can I give up, do without, postpone or alter in order to give to my church?

# It will take all of us working together

# Make a difference for eternity...



Today, we have the privilege of being used by God to finish the work He gave us. Many people have made sacrifices over the years for all of us to enjoy what we now have. It will take all of us to share in this sacrifice together to reach our goal. The cost of this project is simply too great for only a few to carry.

Lakeshore has always been a church based on trusting God by faith for our future. We need everyone at Lakeshore to do the same thing as they consider their part in *Finishing The Work*. If you seek God's will and make a generous gift by faith, our history suggests you will receive in proportion to your giving—even more. You cannot out give God! So commit to an amount that will require God's help to fulfill. Our family is making a large sacrifice for the fourth three-year campaign in a row. We know how faithful God has been.

There is no greater investment that can be made than investing in God's work in the world through the church. So I hope you'll invest generously in *Finishing The Work*.



Tom & Meredith Saluzzo—FTW campaign directors

## How to make your commitment

Included with this brochure is your personal Commitment Card. After praying about your part . . .

1. Pray for God to clearly guide you in your financial commitment.
2. Using the giving guide, write down on your card the amount you commit in faith to give during the next 36 months.
3. Bring your card to the All-Church Celebration services on November 23, or mail in your card if you can't attend the services.
4. Give your up-front gift at the December 7 service (or any time thereafter as appropriate).

*Use your money to do good . . . being ready to share what God has given you. By doing this you will be storing up real treasure for yourselves in heaven—it is the only safe investment for eternity! And you'll be living a fruitful Christian life down here as well.*

**1 Timothy 6:19, LB**



## Let's Finish The Work for our children!

*And anyone who welcomes a little child like this on My behalf is welcoming Me.*

**Matthew 18:5, NLT**

## Let's Finish The Work for our church!

*Christ loved the church and gave Himself up for her . . . for we are members of His body.*

**Ephesians 5:25b, 30, NIV**

## Let's Finish The Work for our community!

*Yes, I try to find common ground with everyone so that I might bring them to Christ.* **1 Corinthians 9:22b, NLT**

## Let's Finish The Work for the commission!

*Therefore go and make disciples of all the nations.* **Matthew 28:19a, NLT**

Ostrozhets Baptist Church  
Ostrozhets, Ukraine

The building blocks to reach your commitment	Weekly	Monthly	3 year total
A little consistency turns into a lot!	\$962	\$4,167	\$150,000
	\$641	\$2,778	\$100,000
	\$481	\$2,083	\$75,000
	\$321	\$1,389	\$50,000
	\$256	\$1,111	\$40,000
	\$192	\$833	\$30,000
	\$160	\$694	\$25,000
	\$128	\$556	\$20,000
	\$100	\$433	\$15,600
	\$75	\$325	\$11,700
	\$50	\$217	\$7,800
	\$25	\$108	\$3,900
	\$20	\$87	\$3,120
	\$15	\$65	\$2,340
	\$10	\$43	\$1,560
	\$5	\$22	\$780